



ELEMENTS AIR

SENSATION SLING | ALUMINUM

Available in: A Air

The Elements air collection features the appearance and comfort of deep seating in a foam-free, cushionless construction. Luxurious Sensation sling fabric is used for the ultimate in low-maintenance comfort and also features benefits such as exceptional shape retention and surface memory. Homecrest's double layer sling design is extremely comfortable and field replaceable. Elements offers a versatile, stylish, and low-maintenance solution for your outdoor seating needs.



ARMLESS CHAT CHAIR
A 51AR352
 H: 36" W: 26.5" D: 33"
 Seat Ht: 18" Arm Ht: N/A



CHAT CHAIR
A 51AR392
 H: 36" W: 32.5" D: 33"
 Seat Ht: 18" Arm Ht: 23"



SWIVEL CHAT CHAIR
A 51AR902
 H: 36" W: 32.5" D: 33"
 Seat Ht: 18" Arm Ht: 23"



LEFT ARM CHAT CHAIR
A 51AR392L
 H: 36" W: 29.5" D: 33"
 Seat Ht: 18" Arm Ht: 23"



RIGHT ARM CHAT CHAIR
A 51AR392R
 H: 36" W: 29.5" D: 33"
 Seat Ht: 18" Arm Ht: 23"



ARMLESS LOVESEAT
A 51AR422N
 H: 36" W: 52.5" D: 33"
 Seat Ht: 18" Arm Ht: N/A



LOVESEAT
A 51AR422
 H: 36" W: 58.5" D: 33"
 Seat Ht: 18" Arm Ht: 23"



LEFT ARM LOVESEAT
A 51AR422L
 H: 36" W: 55.5" D: 33"
 Seat Ht: 18" Arm Ht: 23"



RIGHT ARM LOVESEAT
A 51AR422R
 H: 36" W: 55.5" D: 33"
 Seat Ht: 18" Arm Ht: 23"



ARMLESS SOFA
A 51AR432N
 H: 36" W: 79" D: 33"
 Seat Ht: 18" Arm Ht: N/A



SOFA
A 51AR432
 H: 36" W: 85" D: 33"
 Seat Ht: 18" Arm Ht: 23"



LEFT ARM SOFA
A 51AR432L
 H: 36" W: 82" D: 33"
 Seat Ht: 18" Arm Ht: 23"



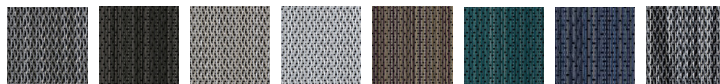
RIGHT ARM SOFA
A 51AR432R
 H: 36" W: 82" D: 33"
 Seat Ht: 18" Arm Ht: 23"



MODE END TABLE/CORNER UNIT
 1310020
 H: 20" W: 35.5" D: 23"

AVAILABLE FABRIC OPTIONS

Air collections are available in Sensation sling fabrics only. Look for the air collection "A" icon.



AGATE II BARK BISQUE CAMEO II CEDAR II LAGOON STRATUS ZINC II

Note: Depending on the desired configuration and use, we recommend ordering multi-seat units to eliminate multiple legs for a cleaner look (i.e. order an armless sofa versus three armless chat chairs).